

**COPYRIGHT STATEMENT:**  
 THESE DOCUMENTS AND THEIR CONTENTS ARE THE PROPERTY OF DON BRYANT ARCHITECTS, INC. (DBA) AND ARE ISSUED ONLY FOR THE SPECIFIC PROJECT NOTED ON THESE DOCUMENTS. ANY REVISIONS, REPRODUCTIONS, OR MODIFICATIONS OF THESE DOCUMENTS WITHOUT THE EXPRESS WRITTEN CONSENT OF (DBA) IS PROHIBITED BY LAW.

**SUBMISSIONS:**

MAR 10, 2005	PRELIMINARY
MAY 09, 2005	PRELIMINARY BID SET
MAY 19, 2005	PRELIMINARY PRICING
MAY 24, 2005	PRELIMINARY PRICING
JULY 13 2005	PERMIT SET

SEAL

PROJECT:  
 PROPOSED NEW TOWNHOMES  
**VILLA COMPANIA CONDOMINIUM'S**  
 HILMAN AVENUE  
 CAPE CANAVERAL, FLORIDA

**DON R. BRYANT**  
 ARCHITECT  
 AR 13733  
 112 DERBY STREET  
 COCOA, FLORIDA 32922  
 (321) 636-8563  
 FAX 321-735-0313

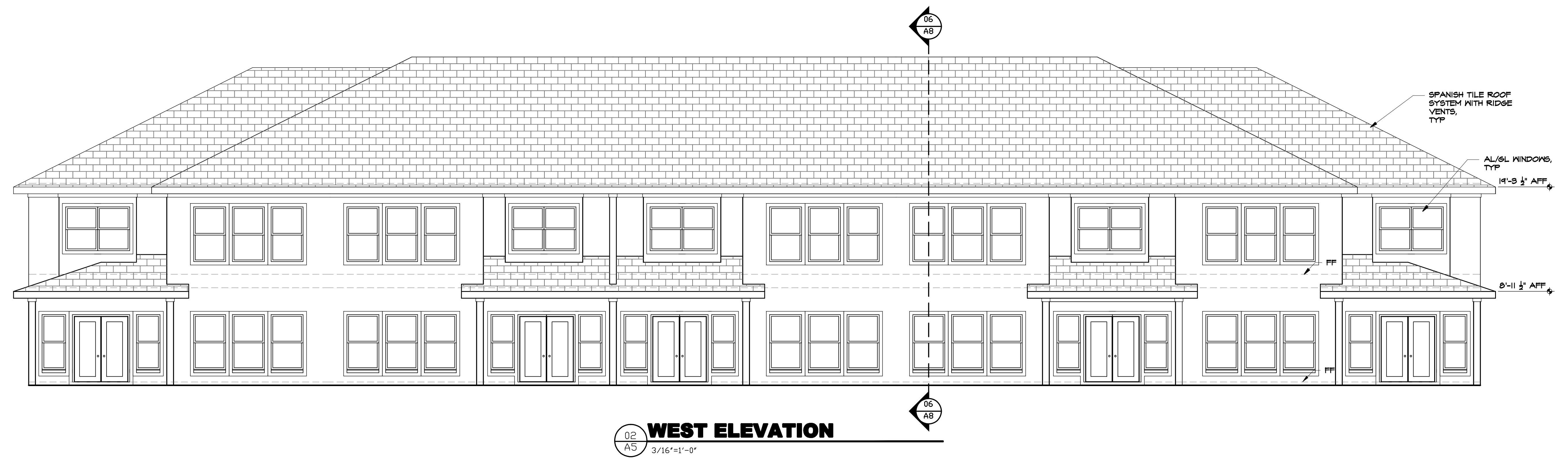
[WWW.VILLAGEARCHITECT.COM](http://WWW.VILLAGEARCHITECT.COM)  
 EM: don@villagearchitect.com  
 ARCHITECTURE  
 PLANNING  
 DESIGN

TITLE:  
**EXTERIOR ELEVATIONS**

COMMISSION: 2005.574  
 SHEET: **A5**



**EAST ELEVATION**  
 01  
 A5  
 3/16"=1'-0"



**WEST ELEVATION**  
 02  
 A5  
 3/16"=1'-0"

